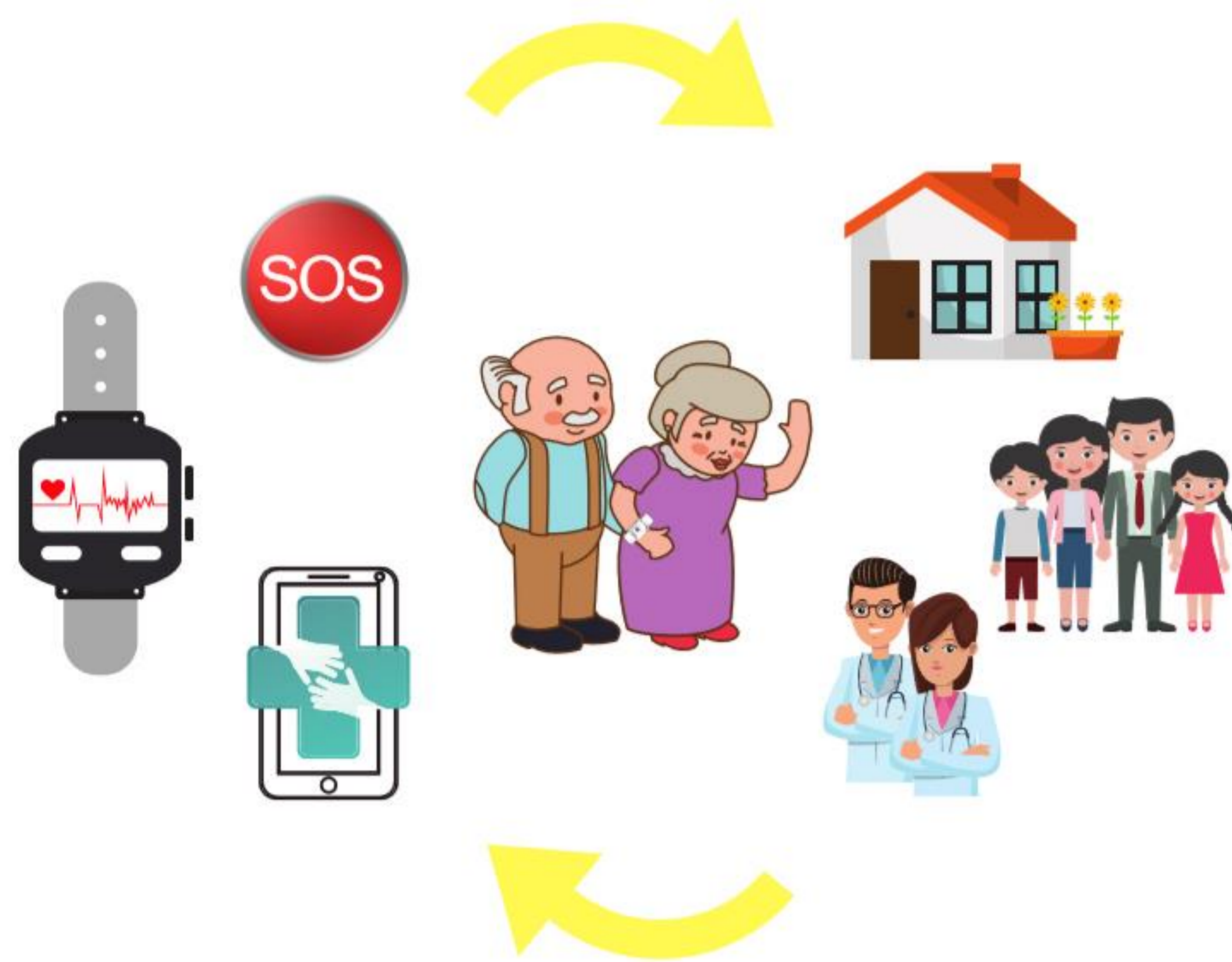




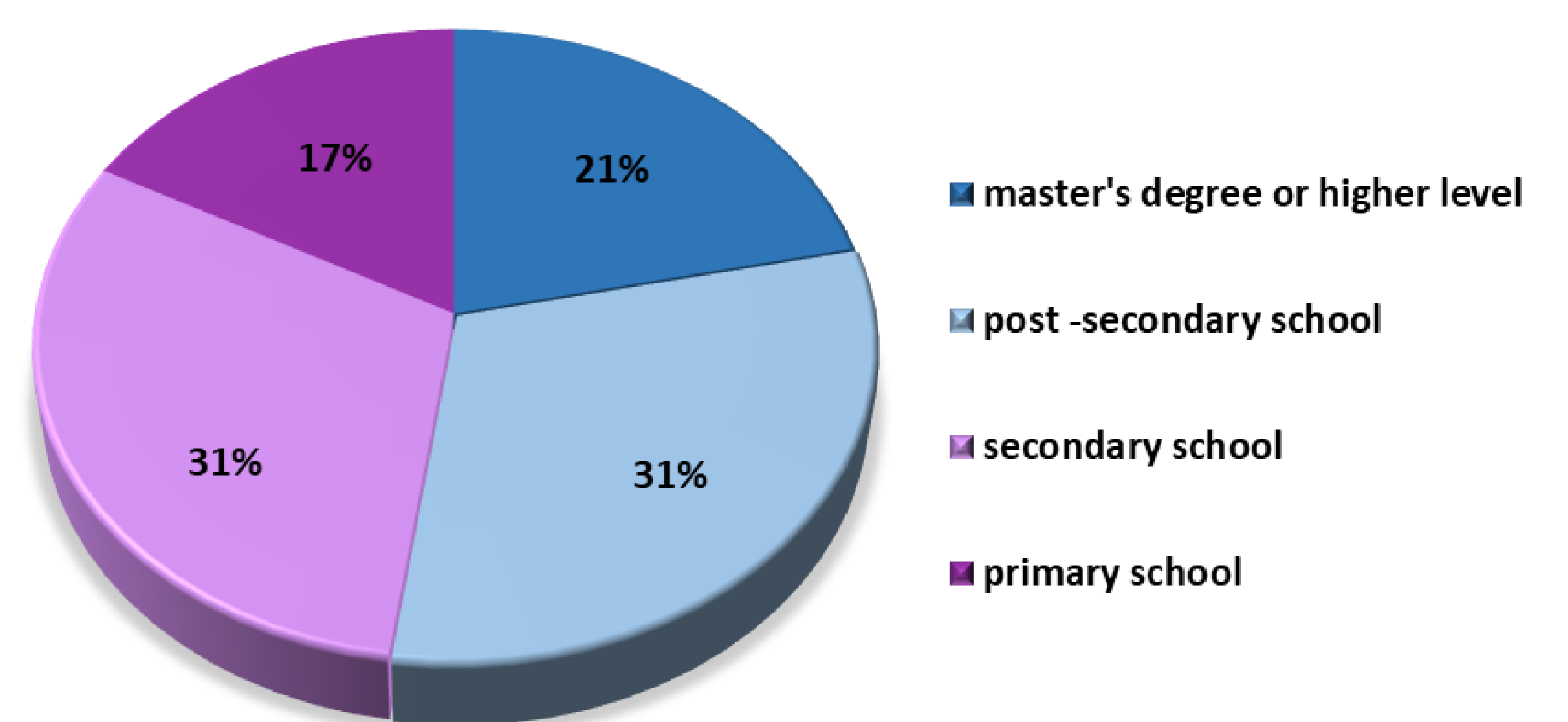
WHAT CAN WE LEARN FROM AN ICT PROJECT DEDICATED TO PEOPLE LIVING WITH DEMENTIA

O. Cramariuc, I. Mocanu, K. Broczek, D. Krivec, J. Kolakowski,
N. Samar Brenčić, Z. Nagymáté, I. Nagy, A. Consoli



The education level appeared to be one of the factors influencing technology acceptance and the ability to use technology.

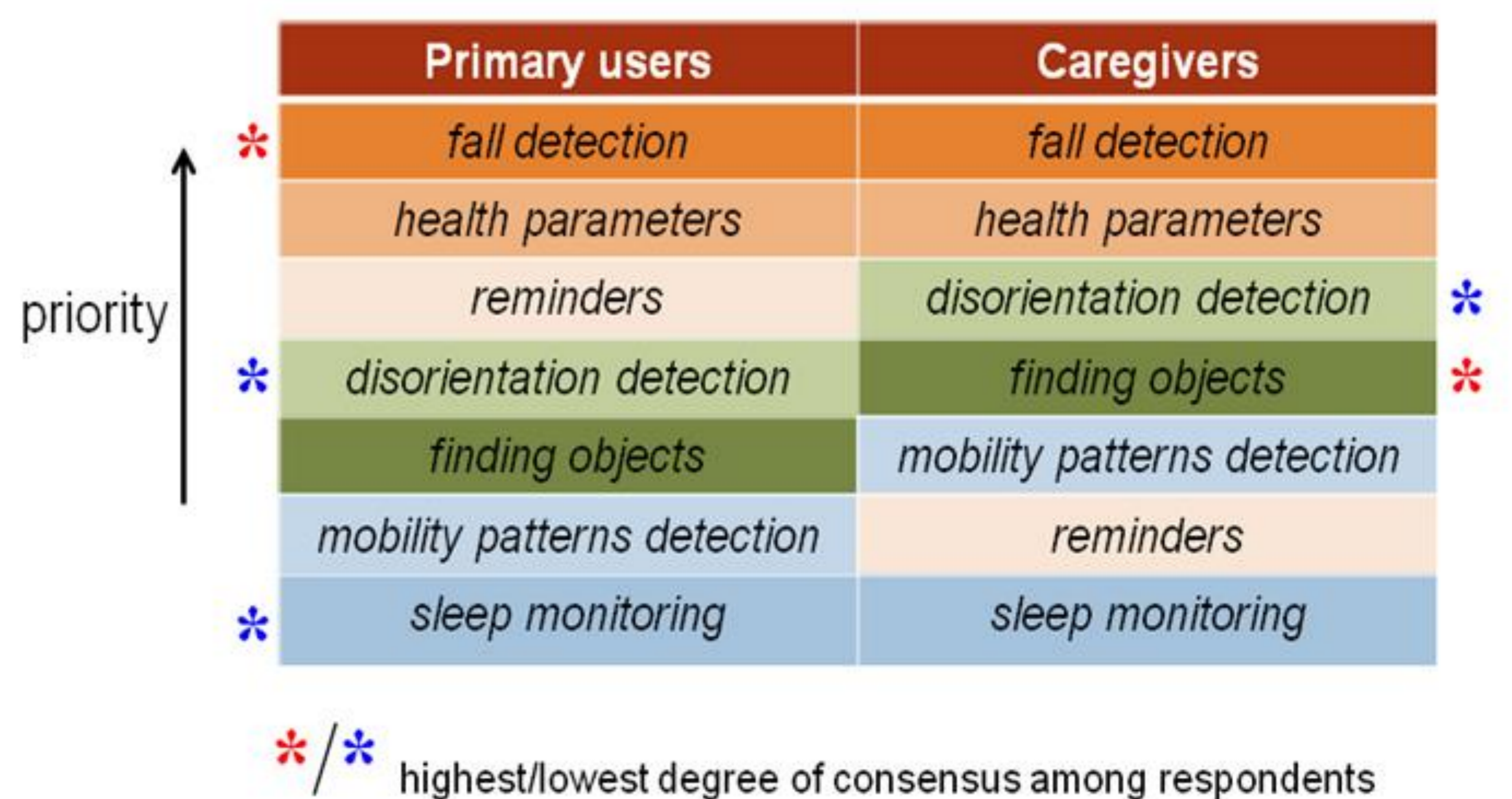
MMSE score (25 - 27) versus educational level



The IONIS core originates from the NITICS AAL project

Persona	IONIS platform primary user (P4)	
Photo		
Fictional name	Sybille	
Demographics	83 years old lives in a nursing home perceives her living standard as fair no access to the Internet education: primary school	
Self-rated health	She rates her health status as fair	
Health problems	She suffers from cardiovascular disease, nervous system disease, musculoskeletal system disease and dizziness	
Regularly uses medical devices	She regularly uses blood pressure meter, glucometer, personal scale and thermometer	
Impairments and disorders	She suffers from mild dementia (MMSE =20), has disorders of balance and walk indoors and outdoors. She has vision problems affecting her daily life, she wears glasses for reading and watching TV	
Sleep problems	She has problems with sleep and often takes sleeping pills, she usually has to use the toilet during the night	
Wellbeing	She often feels sad, tense, or anxious, changes of her mood affect her daily life	
Socialization	She meets with other people every day and would like to socialize more. She prefers personal contacts or phone calls for communication	
Use of electronic equipment and readiness to use ICT	She often uses mobile phone, but never uses tablet, smartphone or computer. She has no problems with using a TV with a pilot,	
IONIS functionalities acceptance	She perceives the following platform functions as useful: <ul style="list-style-type: none"> fall detection, items localization, mobility monitoring, localization outdoors, sleep monitoring, health monitoring, collecting data from medical instruments, personalized calendar, medication reminder. 	

User preferences for the IONIS platform functionalities based on the conjoint analysis results.



Persona cards of PwD inferred through the user involvement in the IONIS project.